

## Report No. 14: Week ending 11 August 2019

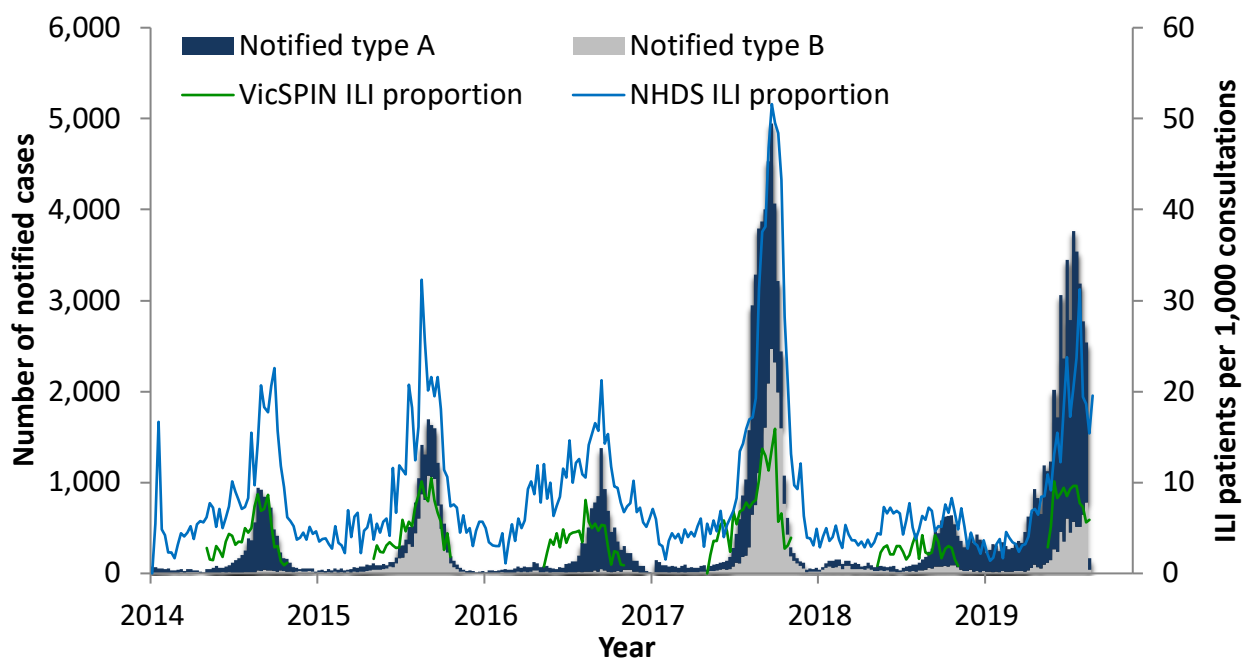
### Overview: The 2019 influenza season so far

**Influenza-like illness** activity remains within the **average** threshold. The total influenza-like illness (ILI) proportion measured by VicSPIN this week is higher than for the same time in 2018, but lower than in 2017, despite higher than usual activity early in the season.

The number of **notified cases of laboratory confirmed influenza is thirteen times higher than at the same time in 2018 and three times higher than in 2017**. The majority of notified cases are type A (85%), and type A cases are older than type B cases; 32% of type B cases are aged less than 10 years compared to 21% of type A cases, and 17% of type A cases are aged 65 years and older compared to 4% of type B cases.

**Twenty-five swabs were received** from VicSPIN this week, of which **36% were positive for influenza**. To date, influenza A(H3) was co-detected with A(H1N1)pdm09 in one case. In five additional cases, influenza was co-detected with another respiratory virus.

*Figure 1. Routinely notified influenza cases and VicSPIN and National Home Doctor Service (NHDS) ILI consultation proportions, Victoria, 2014-2019*



### National Home Doctor Service (Victoria)

- The ILI proportion for the week increased from 15.3 the previous week to 19.6 ILI cases per 1,000 patients seen (Figure 1).
- ILI activity remains within the average activity threshold range of 10-35 ILI cases per 1,000 patients seen.

## Victorian Sentinel Practice Influenza Network

- The total influenza-like illness (ILI) proportion measured by VicSPIN is higher than for the same time in 2018, but lower than in 2017, despite higher than usual activity early in the season. The proportion remains within the average activity level, with 5.9 ILI cases per 1,000 patients seen this week. (Figures 1 & 2).
- Twenty-five swabs were received this week, of which 9 (36%) were positive for influenza (four of A(H3), one A(H1), and four B). Other respiratory viruses were detected in eight swabs. (Figure 3).

Table 1. Summary of reporting from general practice sentinel sites, week ending 11 August 2019

	Week	Year-to-date
Number (%) of general practitioners reporting	84 (100%)	
Total patients seen	5778	86,851
Total patients with ILI	34	656
Consultation rate for ILI (per 1,000 patients)	5.9	7.6
Number of specimens received	25	520
Number (%) positive for influenza	9 (36%)	178 (34%)

Figure 2. VicSPIN ILI consultation proportions, Victoria, 2017, 2018 and 2019

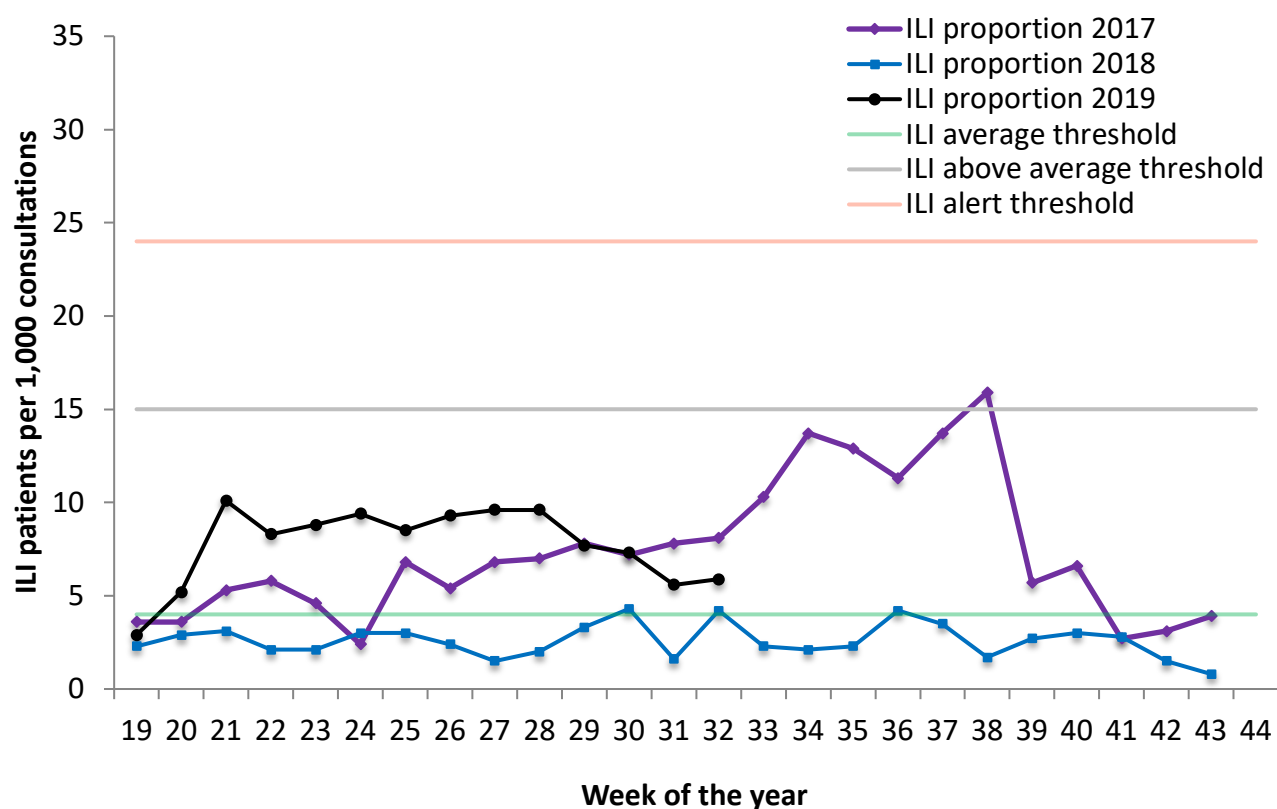
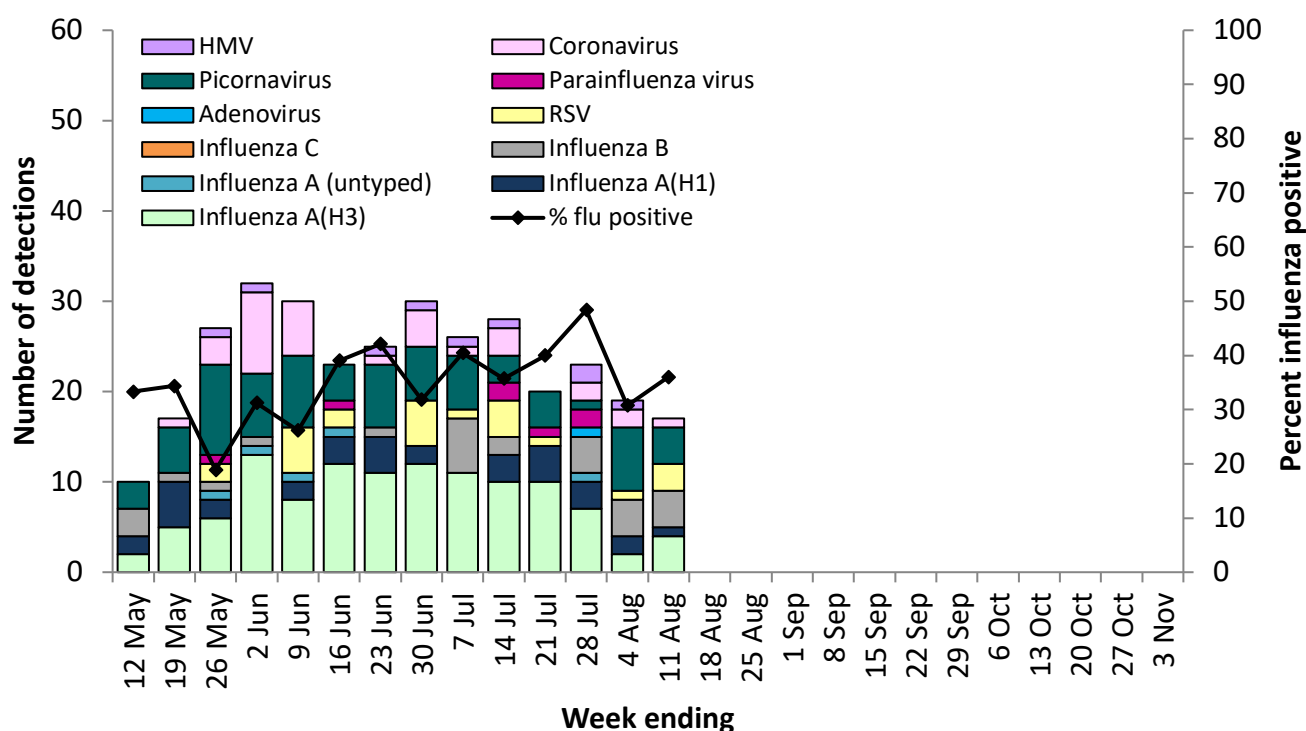


Figure 3. VicSPIN respiratory virus detections and percent influenza positive, Victoria, 2019



## Observations from other influenza surveillance systems

### Notified cases of laboratory confirmed influenza

- A total of 2,528 cases of laboratory confirmed influenza have been processed so far in 2019, thirteen times the number of cases notified at the same time in 2018 but three times the number of cases notified at the same time in 2017 (Figure 1). This number is subject to change as notifications are processed and entered.
- Year to date, 85% of notified cases have been type A (21% aged less than 10 years and 17% aged 65 years and over) and 15% have been type B (32% aged less than 10 years and 4% aged 65 years and over).

### World Health Organization Collaborating Centre for Reference and Research on Influenza

- The strains included in the 2019 quadrivalent influenza vaccine are: A/Michigan/45/2015-Like (H1N1)pdm09 virus; A/Switzerland/8060/2017-like (H3N2) virus; B/Colorado/06/2017-like virus with the quadrivalent vaccine including B/Phuket/3073/2013-like virus as well.
- A total of 254 Victorian isolates have been strain-typed by the WHO to date: 125 as A/Michigan/45/2015-Like; two as A/Michigan/45/2015-Low Reactor; 79 as A/Switzerland/8060/2017-Like; 23 as A/Switzerland/8060/2017-Low Reactor; 16 as B/Colorado/6/2017-Like; eight as B/Colorado/6/2017-Low Reactor; and one as B/Phuket/3073/2013-Like.
- No isolates have shown resistance to zanamivir, however one isolate has shown resistance to oseltamivir among the 1713 Australian isolates tested so far in 2019.