

Report No. 17: Week ending 29 August 2021

Overview: The 2021 influenza season so far

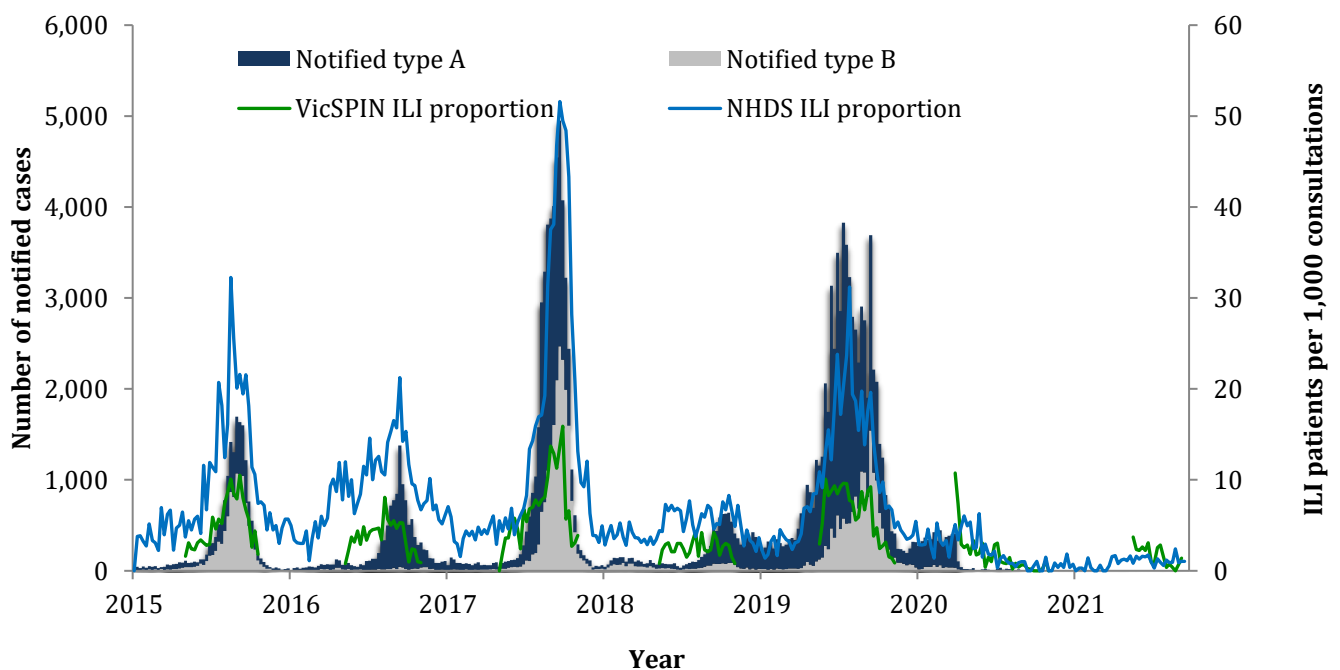
Influenza-like illness (ILI) remains **below the average activity** threshold for this reporting week, with **1.4 ILIs per 1000 patients seen**.

The number of notified cases of laboratory confirmed influenza is **98% lower** than the number notified by the same time in 2020. The majority of notified cases have been **type A (84%)**. There have also been four cases of co-infection with influenza type A and B, and two cases of influenza type C.

Zero swabs were received from VicSPIN this week.

Zero swabs tested positive for influenza.

Figure 1. Routinely notified influenza cases, VicSPIN and National Home Doctor Service (NHDS) ILI consultation proportions, Victoria, 2015 – 2021



National Home Doctor Service (Victoria)

- The ILI proportion for this week is **1.02 ILI cases per 1,000** patients seen (Figure 1).
- ILI activity remains **below** the average activity threshold range of 10-35 ILI cases per 1,000 patients seen.

Victorian Sentinel Practice Influenza Network

- The ILI proportion measured by VicSPIN for this week, is below the average activity threshold with **1.4 ILI cases per 1,000 patients seen**. (Figures 1 & 2, and Table 1).
- **Zero swabs** were received from VicSPIN this week (Figure 3 and Table 1).
- There were zero **swabs** that tested positive for influenza. (Figure 3 and Table 1).

Table 1. Summary of reporting from general practice sentinel sites, week ending 29 August 2021.*

	Week	Year-to-date
Number (%) of general practitioners reporting	30 (100%)	
Total patients seen	2,866	44,028
Total patients with ILI	4	73
Consultation rate for ILI (per 1,000 patients)	1.4	1.7
Number of specimens received	0	35
Number (%) positive for influenza	0 (0%)	1 (2.9%)

* These numbers are subject to change as data are processed and updated.

Figure 2. VicSPIN ILI consultation proportions, Victoria, 2017, 2018, 2019, 2020 and 2021

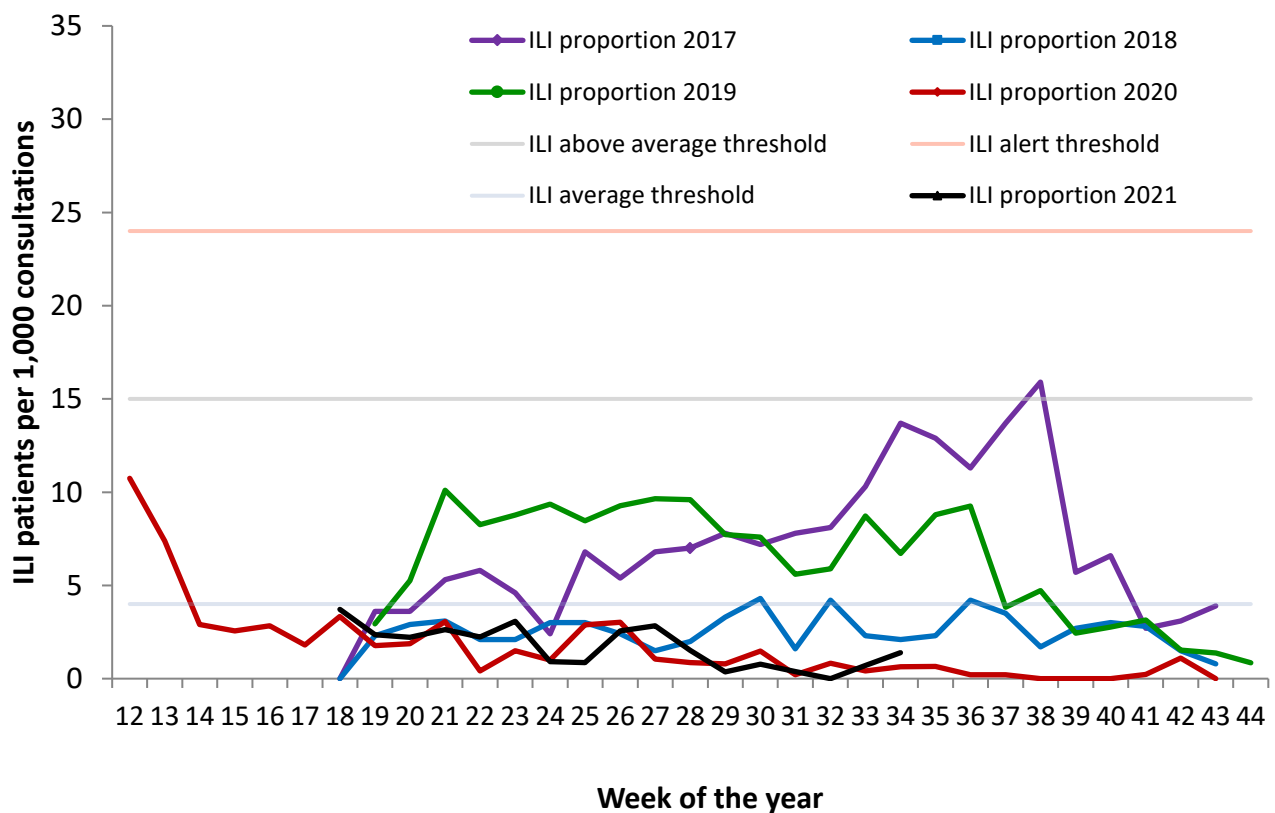
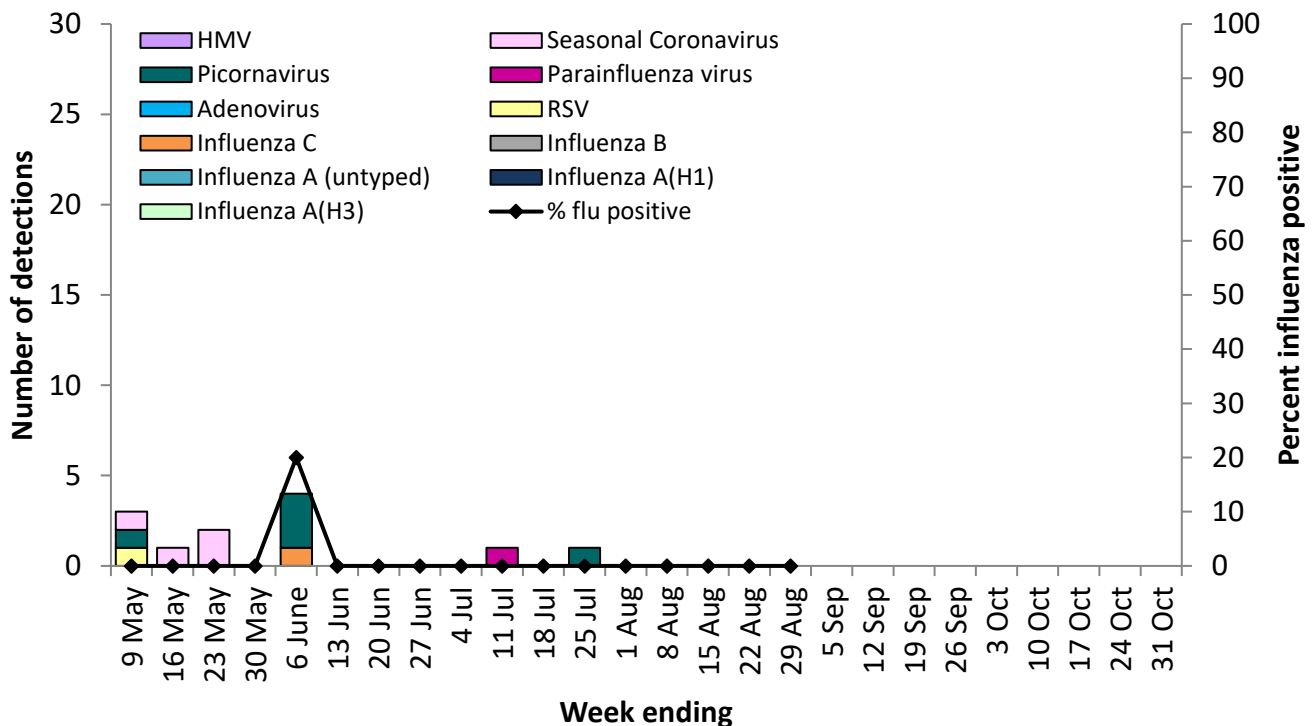


Figure 3. VicSPIN respiratory virus detections and percent influenza positive, Victoria, 2021



Observations from other influenza surveillance systems

Notified cases of laboratory confirmed influenza

- The number of notified cases of laboratory confirmed influenza for this week is 0 cases.
- A total of 80 cases of laboratory confirmed influenza have been processed so far in 2021, a 98% decrease on the number notified by the same time in 2020 (Figure 1).
- Year to date, 84% of notified cases have been type A (18% of Type A cases are aged less than 10 years and 21% aged 65 years and over) and 9% have been type B (86% of Type B cases are aged between 10 and 65 years).
- There have been two notified cases of influenza type C and four notified cases of co-infection with influenza type A and B.
- These numbers are subject to change as data are processed and uploaded.

World Health Organization Collaborating Centre for Reference and Research on Influenza

- The strains included in the 2021 egg-based influenza quadrivalent vaccine are: A/Victoria/2570/2019 (H1N1)pdm09-like virus, A/Hong Kong/2671/2019 (H3N2)-like virus, B/Washington/02/2019-like (B/Victoria lineage) and B/Phuket/3073/2013-like (B/Yamagata lineage) virus. The trivalent vaccine excludes the B/Yamagata lineage virus.
- The strains included in the 2021 cell-based influenza quadrivalent vaccine are: A/Wisconsin/588/2019 (H1N1)pdm09-like virus, A/Hong Kong/2671/2019 (H3N2)-like virus, B/Washington/02/2019-like (B/Victoria lineage) and B/Phuket/3073/2013-like (B/Yamagata lineage) virus.

- A total of 1 Victorian isolate has been strain-typed by the WHO to date:

STRAIN A H1PDM09

0 as A/Victoria/2570/2019-Like

0 as A/Victoria/2570/2019-Low Reactor

STRAIN A H3

0 as A/Darwin/726/2019-Like

0 as A/Darwin/726/2019-Low Reactor

STRAIN B VICTORIA

1 as B/Washington/02/2019-Like

0 as B/Washington/02/2019-Low Reactor

STRAIN B YAMAGATA

0 as B/Phuket/3073/2013-Like

0 as B/Phuket/3073/2013-Low Reactor

N.B. A/Darwin/726/2019 is the cell equivalent of A/Hong Kong/2671/2019-H3N2 vaccine strain.

- No isolates have shown resistance to zanamivir or oseltamivir, among the 9 Australian isolates tested so far in 2021.