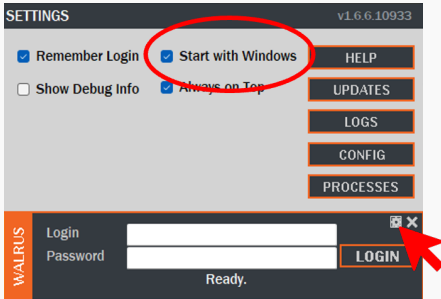


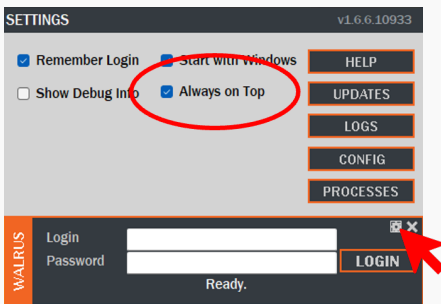
WALRUS doesn't automatically launch on start-up



WALRUS can be configured to automatically open when you start up your computer.

1. Click the settings wheel to expand the settings window.
2. Check the 'Start with Windows' box.

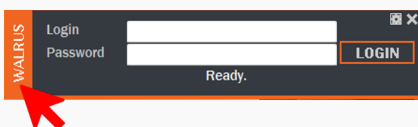
WALRUS disappears behind the patient record window



The WALRUS window should always sit in front of your clinical software.

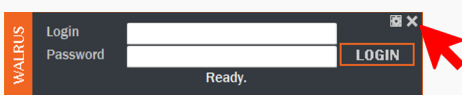
1. Click the settings wheel to expand the settings window.
2. Check the 'Always on Top' box.

WALRUS is blocking my view

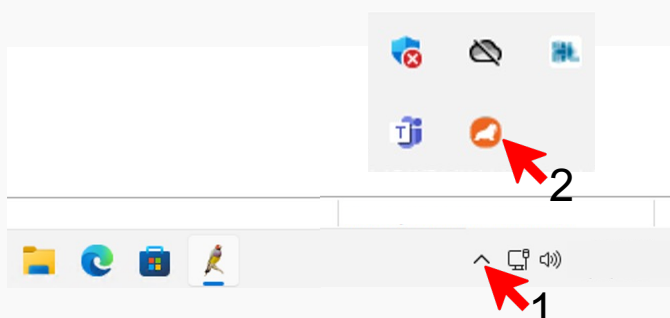


WALRUS can be dragged anywhere onscreen, using the orange tab on the left-hand side.

I closed WALRUS and now it won't launch again



Clicking the X to close WALRUS will hide its icon in the system tray of Windows.



1. Click the ^ button on the right-hand side of the Windows taskbar to show the system tray.
2. Double click on the POLAR icon to launch WALRUS again.